

# Rittal – The System.

Faster – better – everywhere.

## ▶ **Drawer 482.6 mm (19")/2 U for keyboard and mouse – CP 6002.000**

Date : Jan 28, 2019

ENCLOSURES

POWER DISTRIBUTION

CLIMATE CONTROL

IT INFRASTRUCTURE

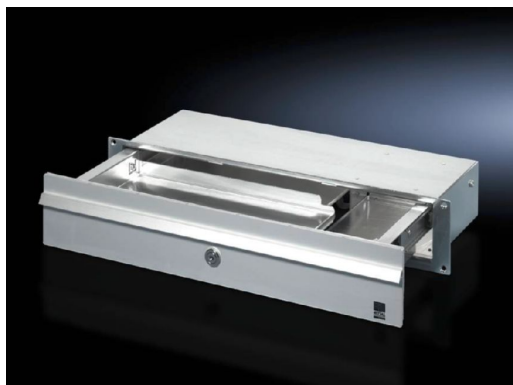
SOFTWARE & SERVICES

FRIEDHELM LOH GROUP



# Drawer 482.6 mm (19")/2 U for keyboard and mouse – CP 6002.000

created: 28.01.2019 build on [www.rittal.com/uk-en](http://www.rittal.com/uk-en)



## Product description

<b>Applications:</b>	Support of standard commercially-available mouse or trackball.
<b>Material:</b>	Drawer housing: Sheet steel Drawer and front panel: Aluminium
<b>Surface finish:</b>	Drawer housing: Zinc-plated Drawer and front panel: Natural anodised
<b>Supply includes:</b>	Assembly parts for installation in Comfort Panel/Optipanel command panel.

## Product features

<b>Dimensions:</b>	Width: 482.6 mm Width: 19" Depth: 150 mm
<b>Installation options:</b>	directly in the Comfort Panel or Optipanel with the appropriate size sufficiently large surfaces (e.g. door, side panel), 482.6 mm (19") system punchings, front panels
<b>Keyboard dimensions:</b>	Width (max.): 390 mm Height (max.): 32 mm Depth (max.): 139 mm
<b>Units:</b>	2 U
<b>Packs of:</b>	1 pc(s).

<b>Weight/pack:</b>	2.8 kg
<b>EAN:</b>	4028177150072
<b>Customs tariff number:</b>	76169990
<b>ETIM 6.0:</b>	EC002620
<b>ETIM 5.0:</b>	EC002620
<b>eCl@ss 8.0/8.1:</b>	27189261
<b>eCl@ss 7.0/7.1:</b>	27189261
<b>eCl@ss 6.0/6.1:</b>	27189261
<b>eCl@ss 5.1/5.1.4:</b>	27189219
<b>Product description:</b>	CP Drawer 482.6 mm (19")/2 U, for keyboard and mouse